

MULTIFORME®

ADDENDUM 2018



MULTIFORME®

Situata nel cuore del Distretto Veneto dell'Illuminazione, tra Padova e Venezia, MULTIFORME® risponde alle molteplici e particolari esigenze di illuminazione decorativa, calibrandole per ogni professionista del settore su scala internazionale.

L'azienda opera autonomamente grazie alle proprie aree di progettazione e produzione interne. E' in grado di seguire nel dettaglio progetti articolati fornendo soluzioni di alto profilo, sia a livello tecnico che estetico.

Ogni fase delle lavorazioni viene controllata perseguendo la Mission aziendale: la bellezza e l'eccellenza dell'opera, nella soddisfazione del cliente finale.

Ogni nostro prodotto deve essere Buono, oltre che Bello.

I nostri target sono commesse per ville, hotel, edifici pubblici e religiosi. Oltre alla produzione di serie siamo in grado di elaborare progetti custom.

Con serietà e passione, il nostro intento quotidiano è quello di contribuire a diffondere nel mondo i valori tipici del Made in Italy per continuare a creare i grandi classici di ieri, di oggi e di domani.

MULTIFORME® is an Italian company specialized in decorative high-end lighting.

Each light-work is calibrated for professionals around the globe. The company operates autonomously through its own team of interior designers and artisans.

Each stage of processing pursues our mission: the beauty and excellence of the work, for customer's satisfaction.

Our products must be good, as well as beautiful.

In addition to standard production, we are able to develop custom projects. Our aim is to light up mansions, hotels, public and religious buildings.

Our intent is to spread the Made in Italy traditional values with our passion and professionalism to make the world appreciate these timeless light-works.

PROGRESSIVE

12	OXI
14	Tribeca
18	Dadaumpa
20	Galactic
22	Desafinado
26	Polaris
28	Octoban
30	B&L
32	Hexigo
34	Infinity
36	Goblin
40	Scintilla
44	Delice
46	Bebop
50	Chimera
52	Absolute
54	Absolute d'Acqua
56	Dancer
62	Vanity
68	Charleston

TIMELESS

74	Serenade
76	Melisanda
78	Tourbillon
80	Metropole
84	Montecristo
86	Dandy
88	Velvet
90	Portofino
92	Tobia
94	Pasternak
98	Americano
100	Gatsby
102	Gatsby Naked
104	Diamante
108	Fluage
110	Bovary
112	Caesar
118	Villa Borghese
120	Rosae Rosarum

PROGRESSIVE



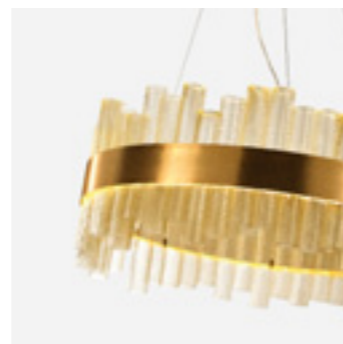
OXI p. 12



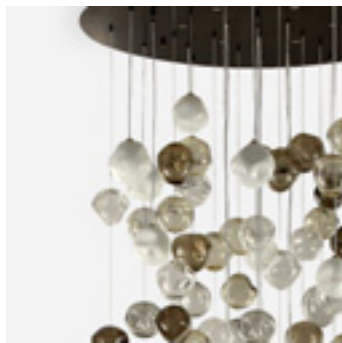
Tribeca p. 14



Dadaumpa p. 18



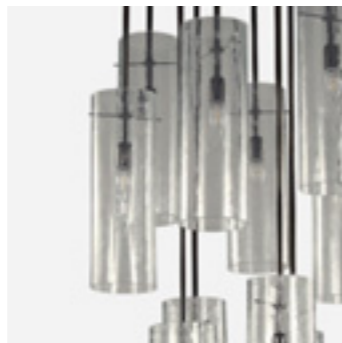
Galactic p. 20



Desafinado p. 22



Polaris p. 26



Octoban p. 28



B&L p. 30



Hexigo p. 32



Infinity p. 34



Goblin p. 36



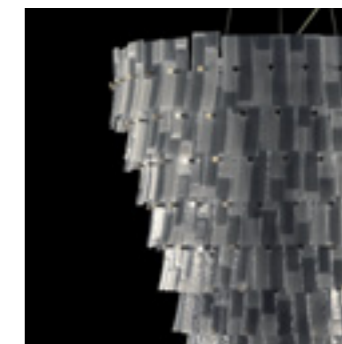
Scintilla p. 40



Delice p. 44



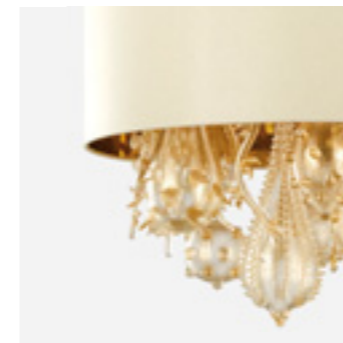
Bebop p. 46



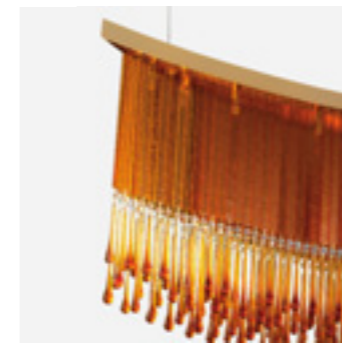
Chimera p. 50



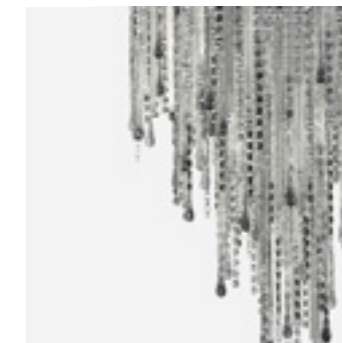
Absolute p. 52



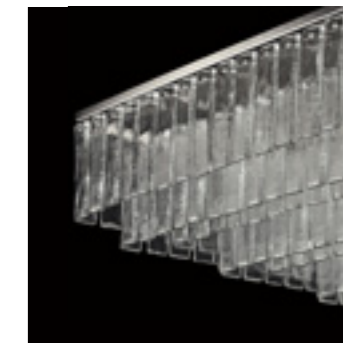
Absolute d'acqua p. 54



Dancer p. 56

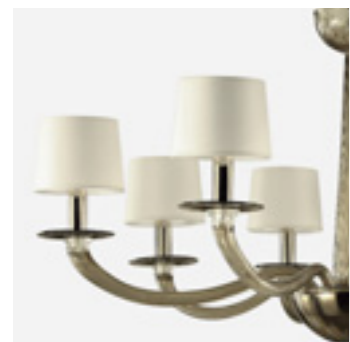


Vanity p. 62

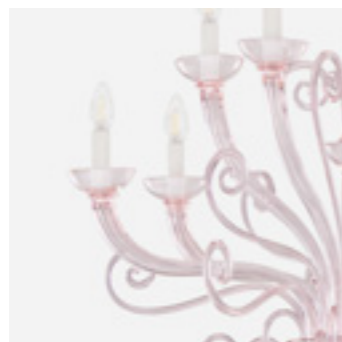


Charleston p. 68

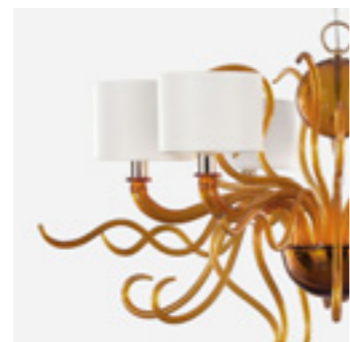
TIMELESS



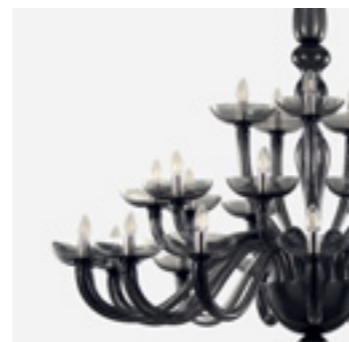
Serenade p. 74



Melisanda p. 76



Tourbillon p. 78



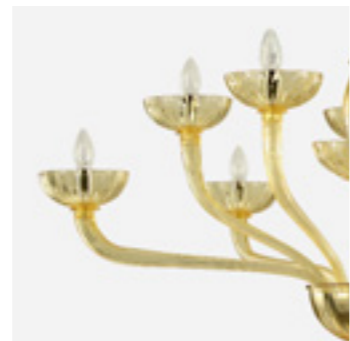
Metropole p. 80



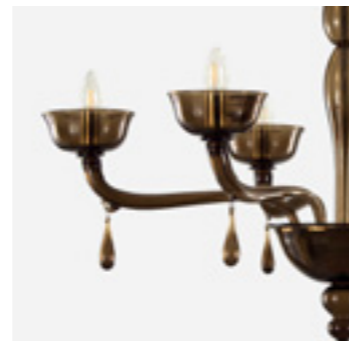
Montecristo p. 84



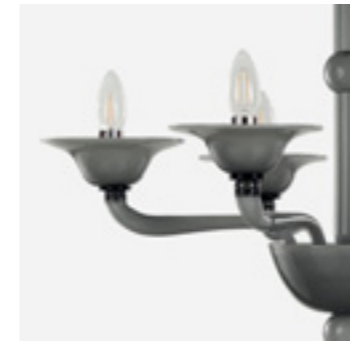
Dandy p. 86



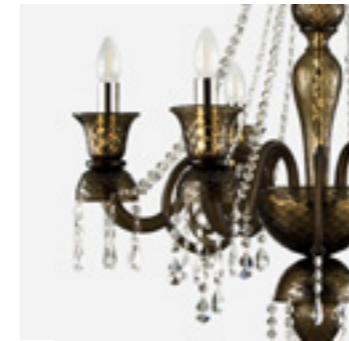
Velvet p. 88



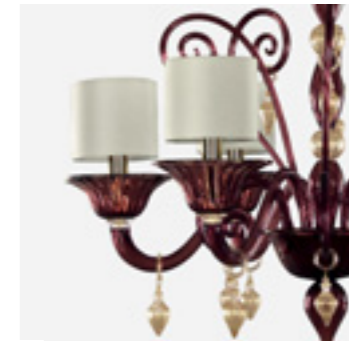
Portofino p. 90



Tobia p. 92



Pasternak p. 94



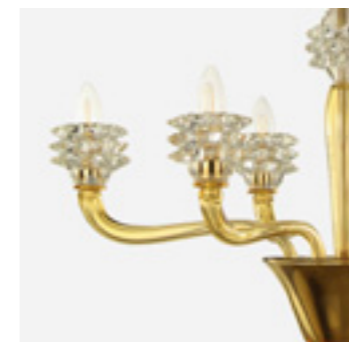
Americano p. 98



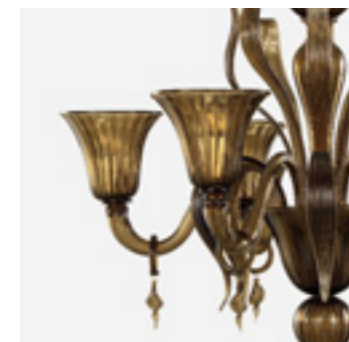
Gatsby p. 100



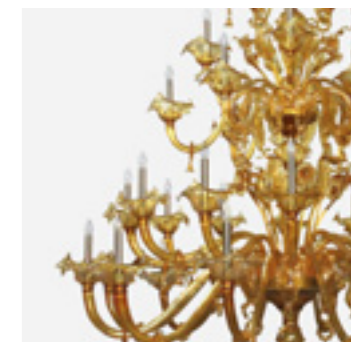
Gatsby Naked p. 102



Diamante p. 104



Fluage p. 108



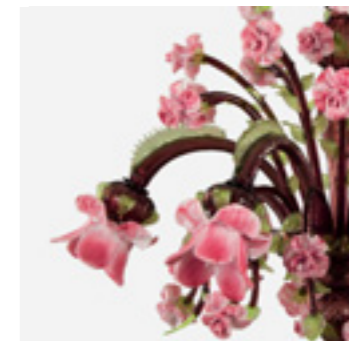
Bovary p. 110



Caesar p. 112



Villa Borghese p. 118



Rosae Rosarum p. 120

The background of the image is a dark, textured surface, likely water, reflecting various colors of light. The reflections are vertical and elongated, creating a shimmering effect. The colors include bright yellow, blue, green, and pink. The overall mood is mysterious and artistic.

PROGRESSIVE

OXI

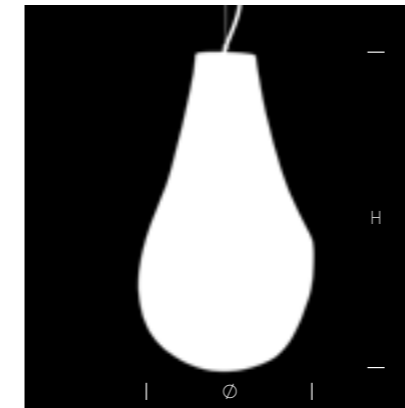
W SS6530-W
E27 4 x MAX 40W
by BARZILEYE design



OXI

 by BARZILEYE design

Technical data



R Ceiling cup
C Chain
H Height
Ø Diameter
D Depth
W Width

Bulb
 Weight
 Insulation class
 Frame Finishes

Colors

W white

General Specifications

CE IP20



SS6530-W-MC
Ø 13 cm - H 30 cm
 E27 1 x MAX 40W 1,5 KG



SS6530-W-MG
Ø 17 cm - H 34 cm
 E27 1 x MAX 40W 2 KG



SS6530-W-MD
Ø 20 cm - H 43 cm
 E27 1 x MAX 40W 2,5 KG



SS6530-W-ML
Ø 21 cm - H 60 cm
 E27 1 x MAX 40W 3,5 KG

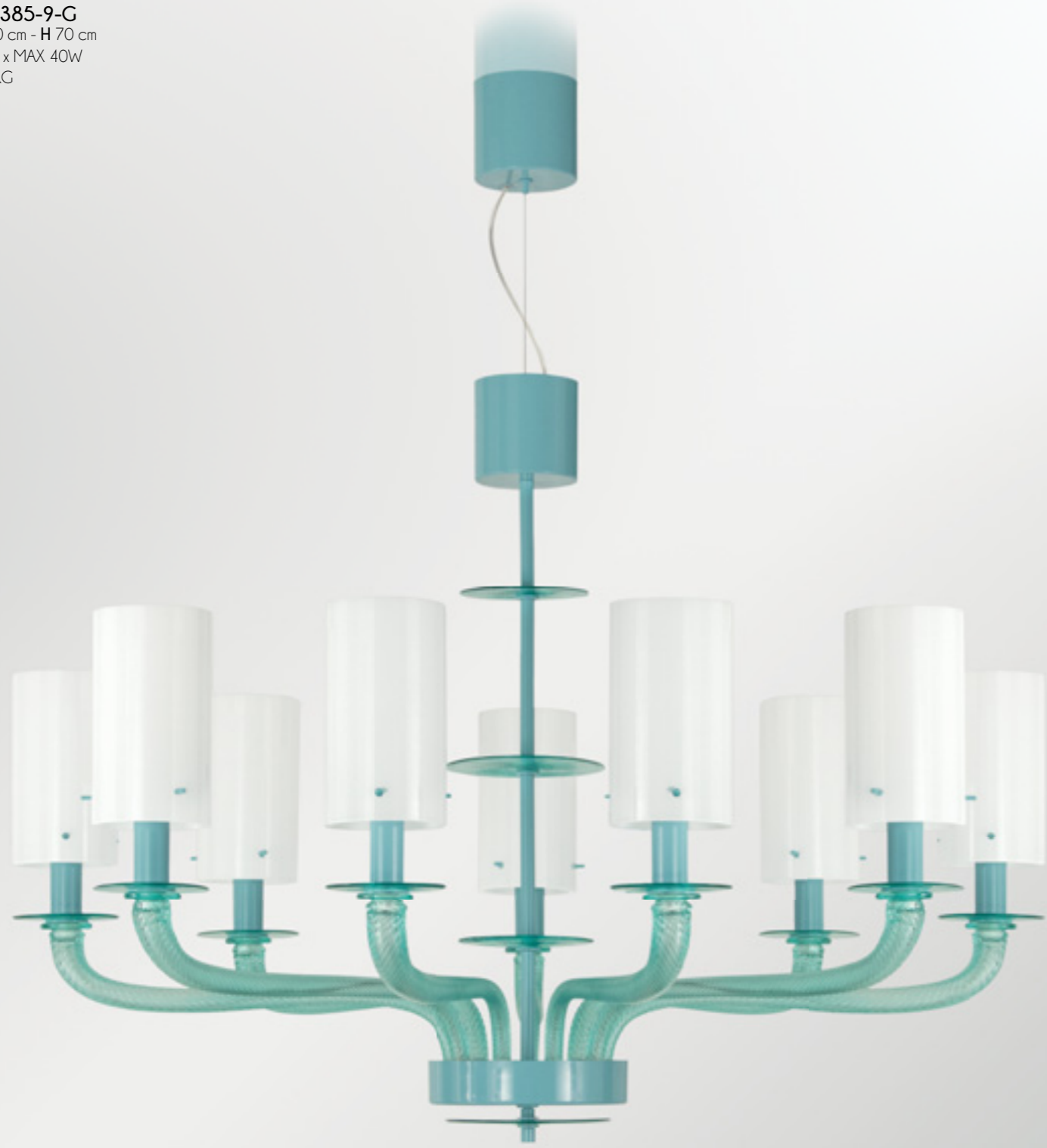
Tribeca

R
BLP0385-18-R
Ø 100 cm - H 75 cm
E14 18 x MAX 40W
■ 20 KG



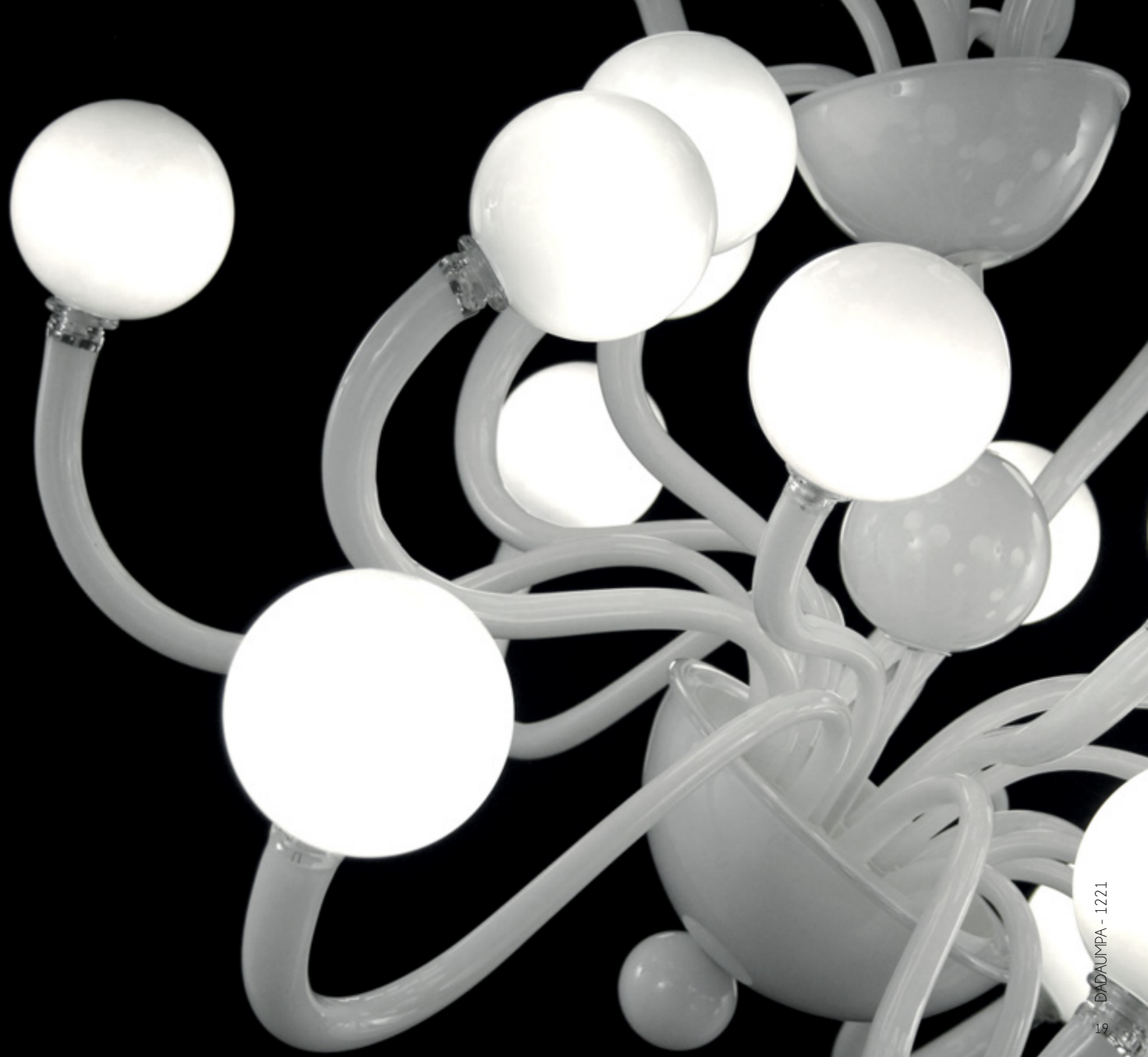


BLP0385-9-G
Ø 100 cm - H 70 cm
E14 9 x MAX 40W
14 KC



Dadaumpa

W D1221-24-W
Ø 130 cm - H 140 cm
G9 24 x MAX 25W
25 KG



Galactic

K SS6620-75-K
Ø 75 cm - H 100 cm
E14 6 x MAX 40W
■ 32 KG

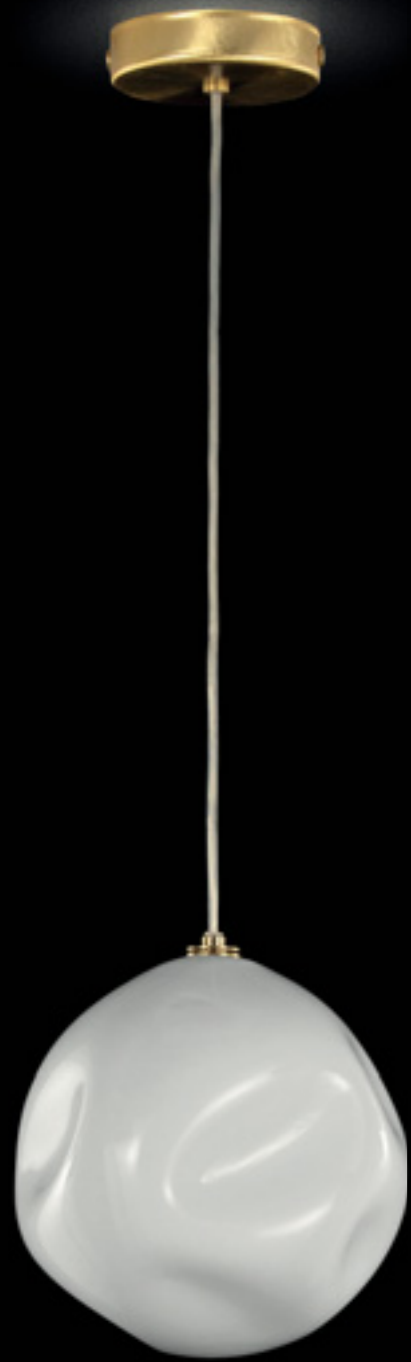


Desafinado

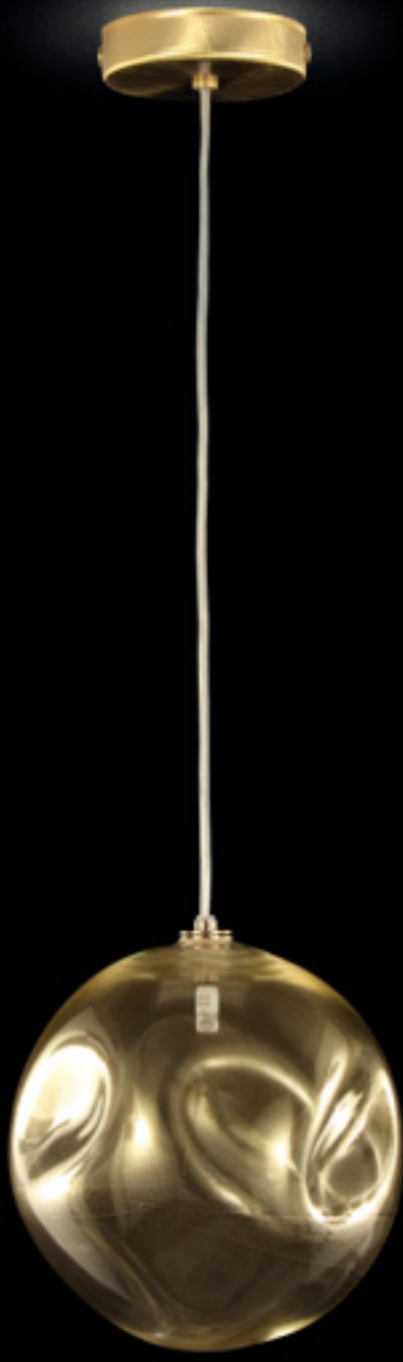
PL7540-100x260-1
Ø 100 cm - H 260 cm
G9 16 x MAX 25W
COB LED 6 x 11 W
75 KG



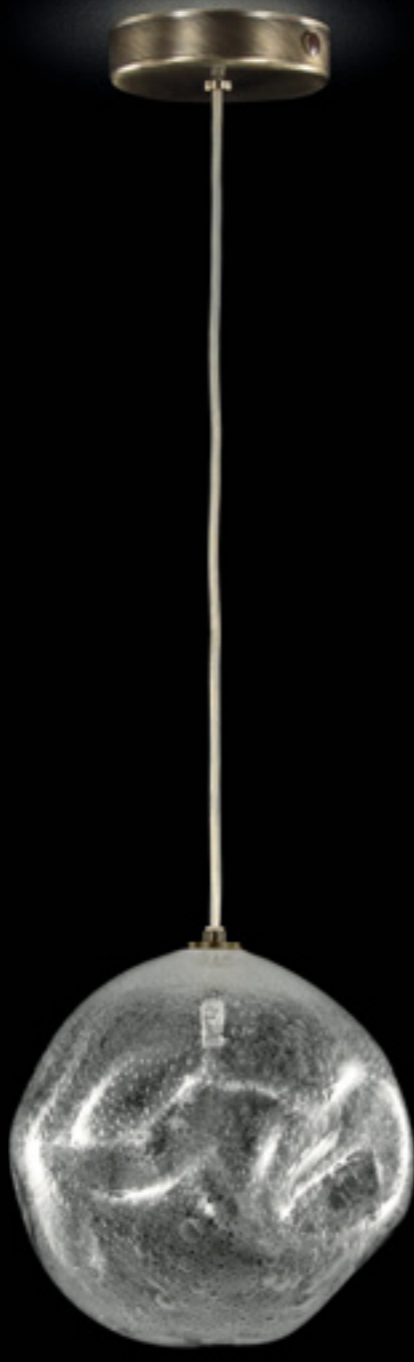
SS7540
Ø 17 cm - H 60 cm
G4 1 x MAX 5W
2,5 KG



W



K



C1



C



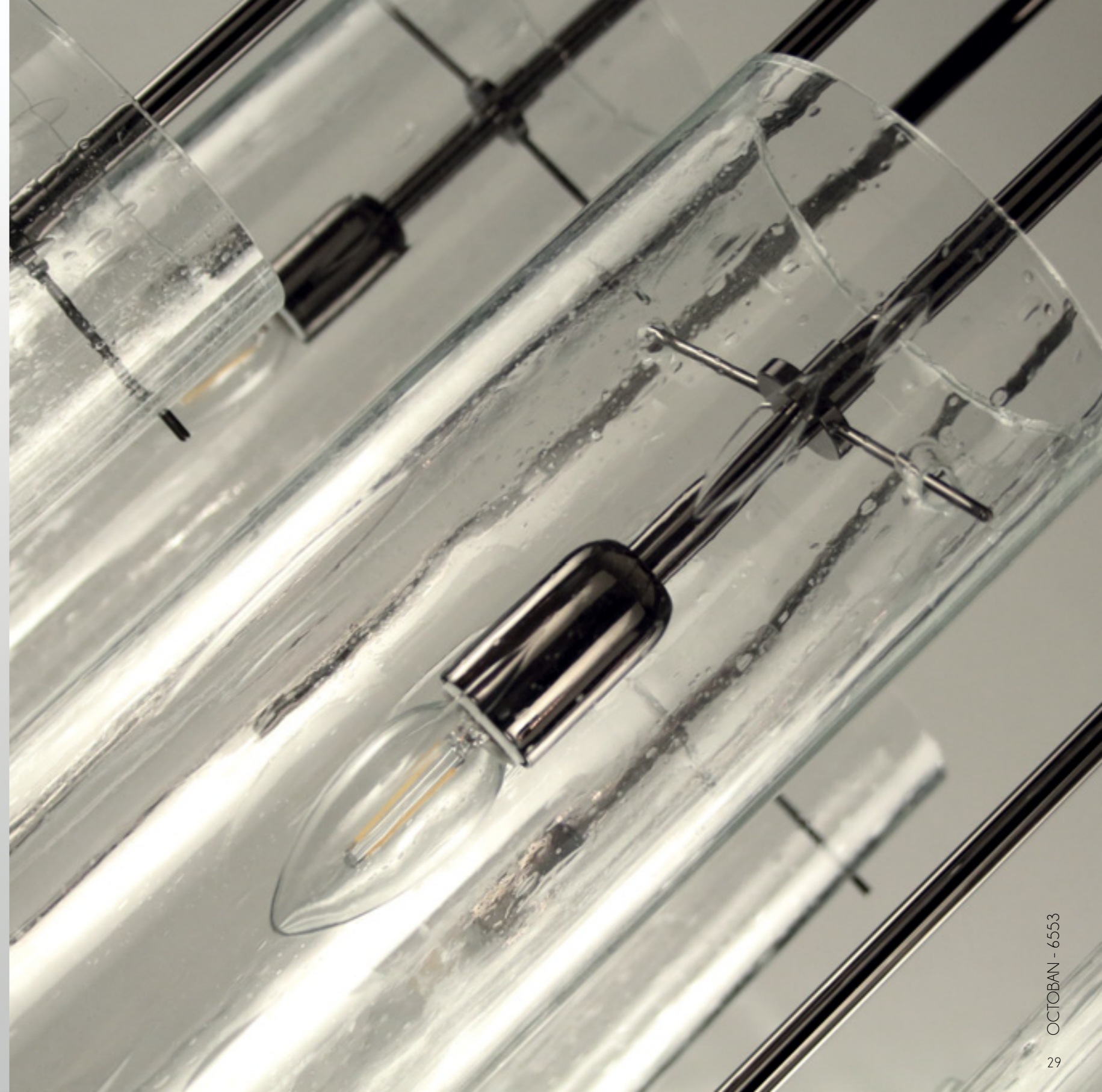
Polaris

C PL7520R-38x95x50-N1
W 95 cm - H 50 cm - D 38 cm
G9 10 x MAX 40W
32 KG



Octoban

PL6553-70x150
Ø 70 cm - H 150 cm
E14 10 x MAX 40W
■ 20 KG



B&L



BD1025-8+4-KW
Ø 110 cm - H 135 cm
G9 12 x MAX 40W
20 KG
by MOCA DESIGN



Hexigo

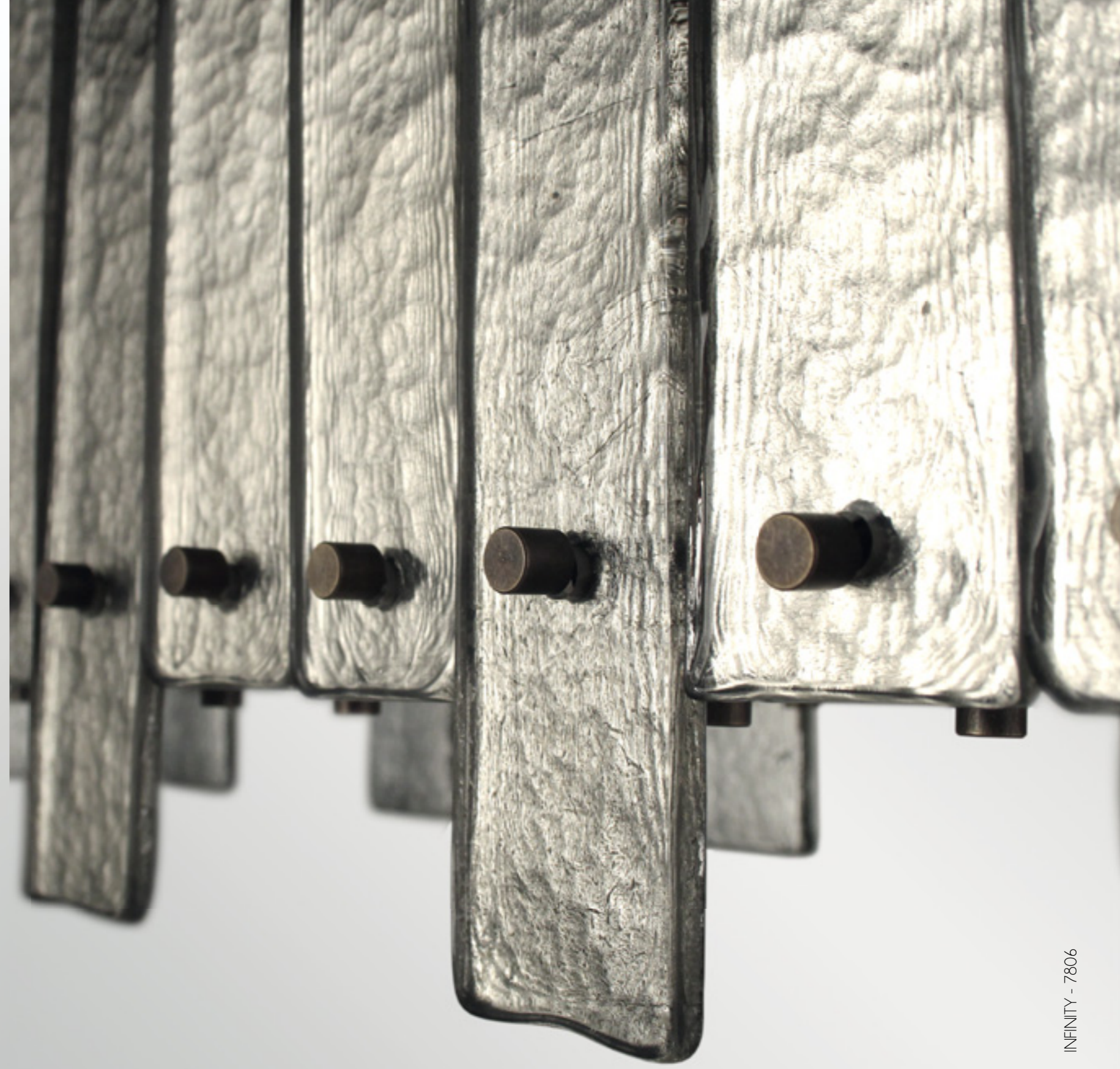
K

BD3430-30-K
Ø 100 cm - H 230 cm
SMD LED 30 x 3W - 3000K
30 KG
by MOCA DESIGN



Infinity

CK PL7806-EB
W 140 cm - H 92 cm - D 52 cm
E14 21 x MAX 40W
■ 95 KG



Goblin

WCK L1075-10-WCK
Ø 100 cm - H 120 cm
G9 10 x MAX 40W
14 KG





D **SS1075-D-1**
 Ø 21 cm - H 65 cm
 E27 1 x MAX 40W
 ■ 4 KG



F **SS1075-F-3**
 Ø 25 cm - H 65 cm
 E27 1 x MAX 40W
 ■ 4 KG



D **SS1075-D-2**
 Ø 25 cm - H 65 cm
 E27 1 x MAX 40W
 ■ 4 KG



CK **P1075-CK**
 Ø 41 cm - H 195 cm
 E27 1 x MAX 40W
 ■ 20 KG

Scintilla



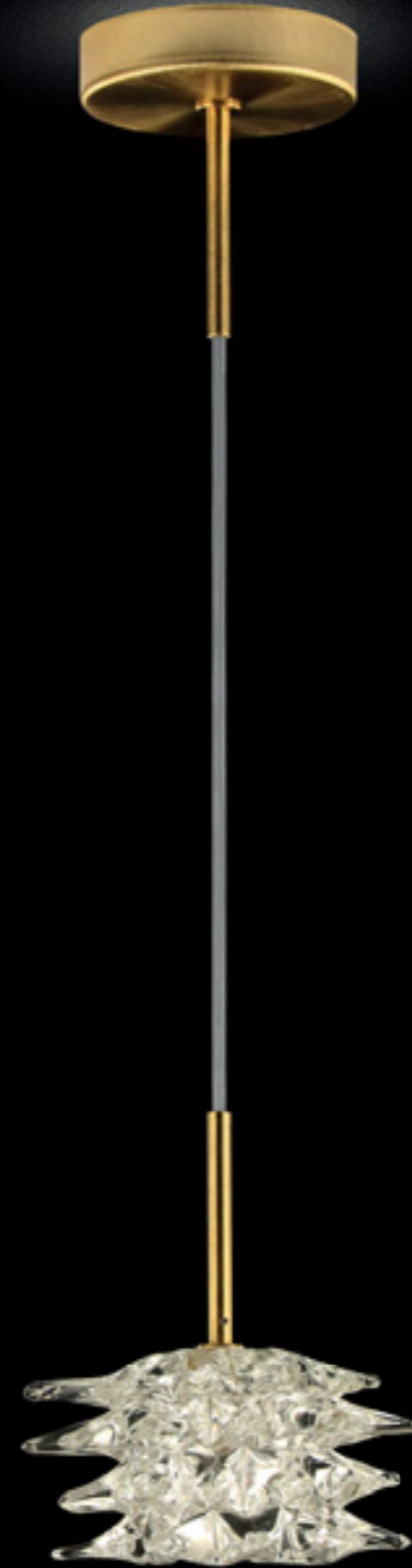
PL7610-37-CK
Ø 90 cm - H 190 cm
G4 37 x MAX 25W
30 KG



CK PL7610-9-CK
Ø 40 cm - H 190 cm
G4 9 x MAX 25W
10KG



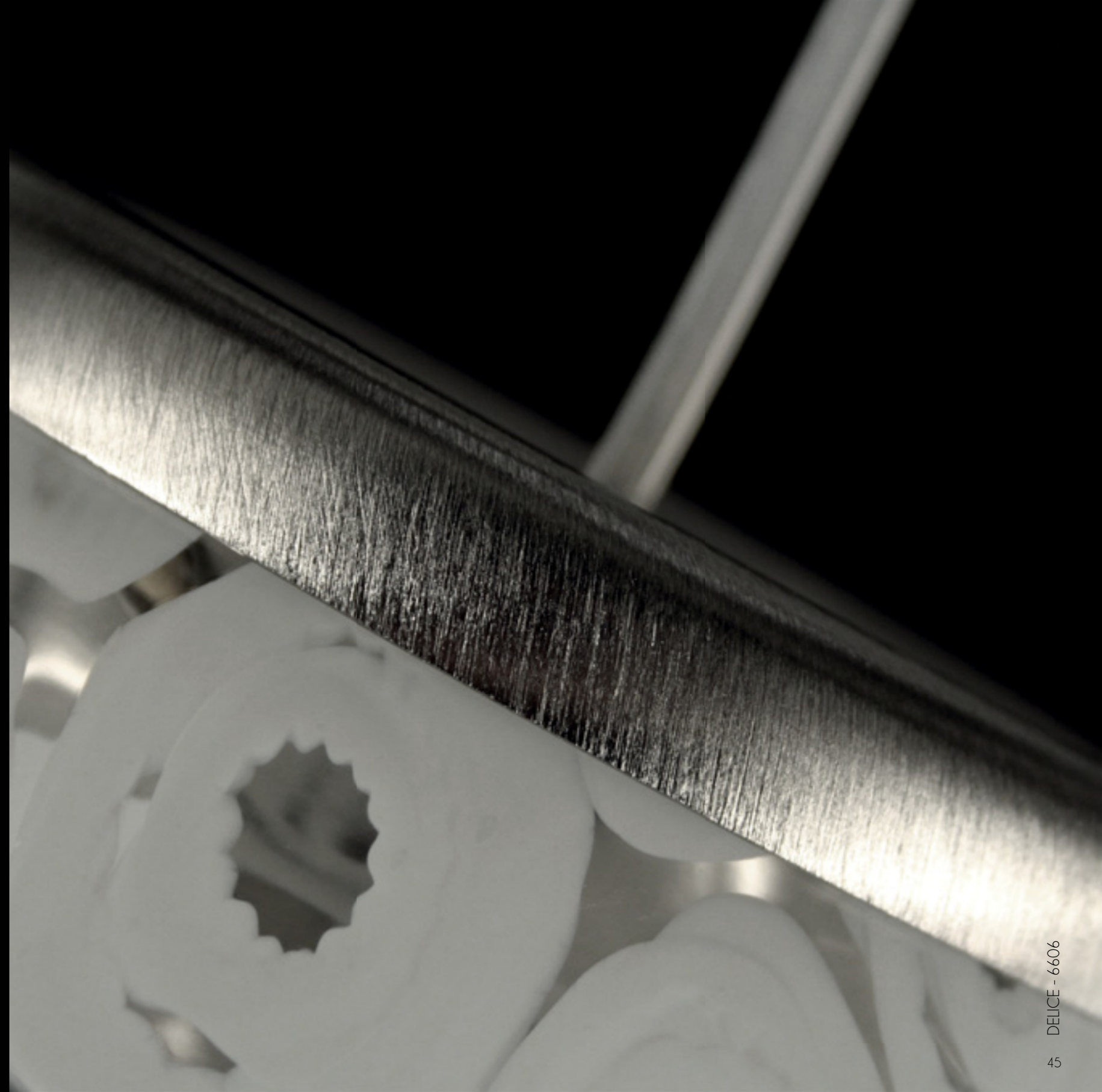
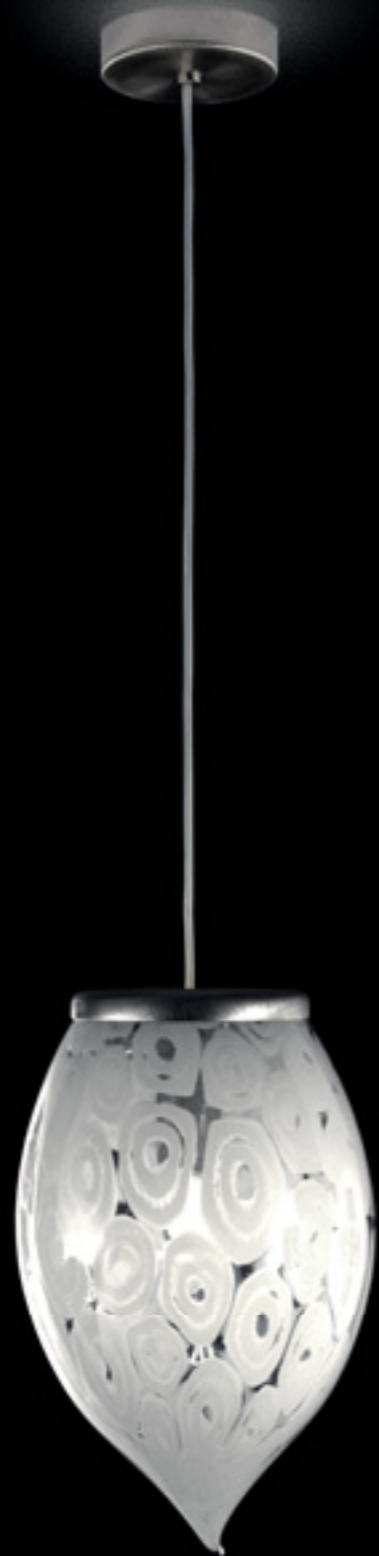
CK SS7610-CK
Ø 10 cm - H 50 cm
G4 1 x MAX 25W
2KG



Delice



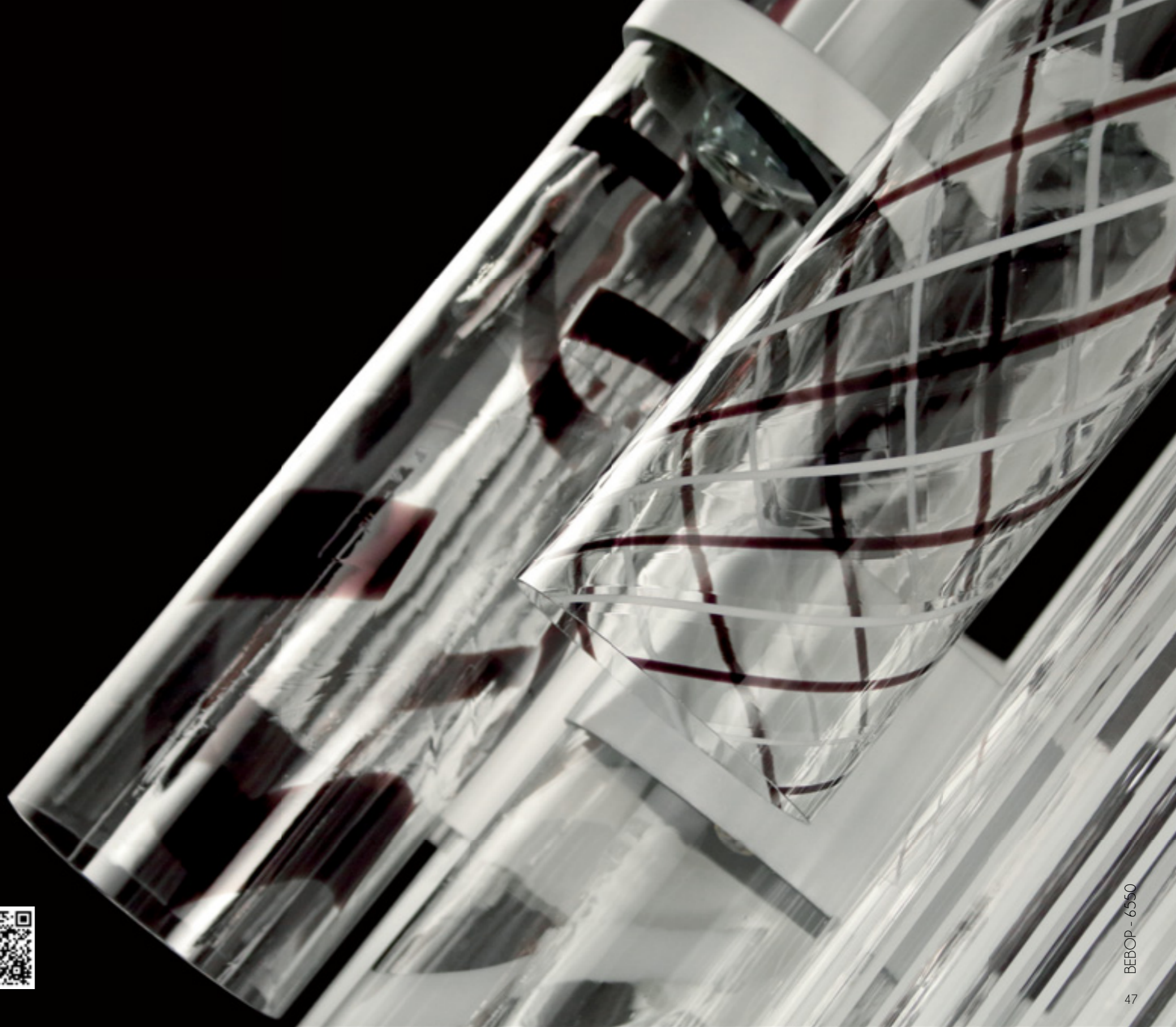
SS6606-1WN1
Ø 22 cm - H 60 cm
E14 1 x MAX 25W
3 KG



Bebop

1DW

PL6550-12-1DW
Ø 70 cm - H 170 cm
G9 12 x MAX 25W
35 KG



CW PL6550-12-CW
Ø 70 cm - H 160 cm
G9 12 x MAX 25W
35 KG



Chimera

DK

SS7701-DK
Ø 80 cm - H 110 cm
G9 14 x MAX 40W
60 KG



Absolute

AKL SSP3600-100-AKL
Ø 100 cm - H 110 cm
G9 9 x MAX 40W
■ 35 KG



Absolute d'acqua

KV SSP3601-65-KV
Ø 65 cm - H 65 cm
G9 7 x MAX 40W
■ 40 KG

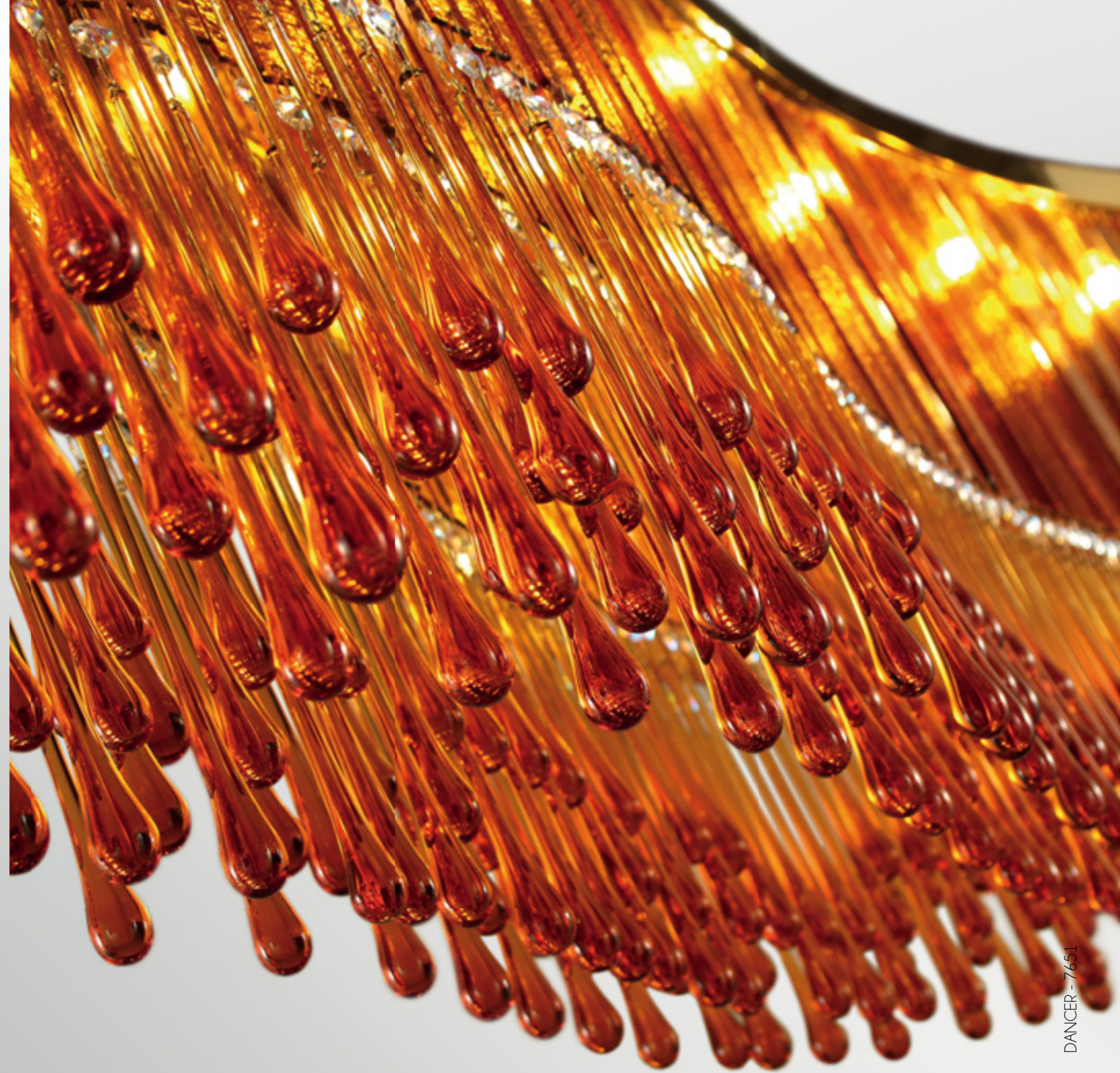


Dancer

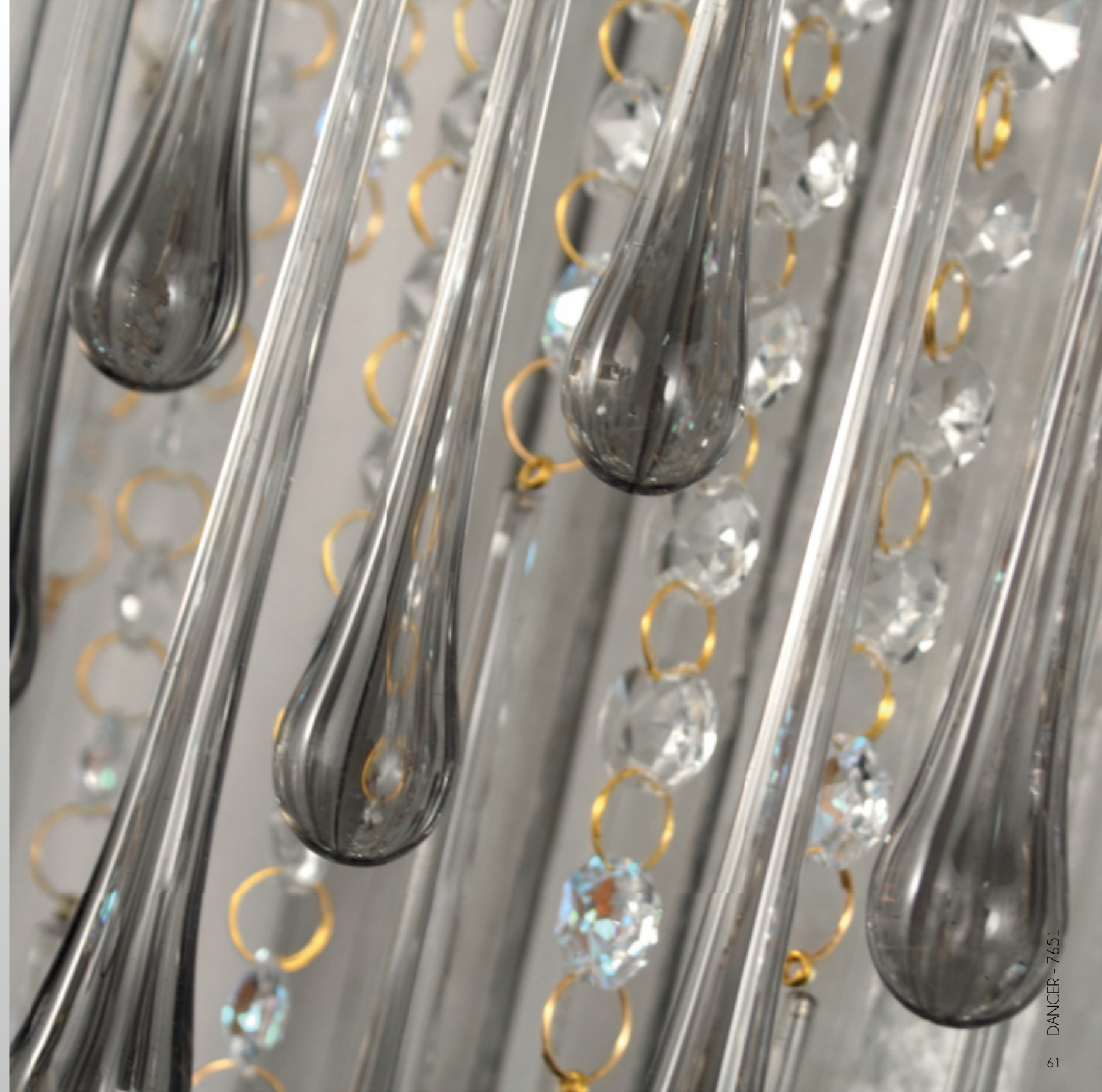
DK SS7651-DK
W 170 cm - H 60 cm - D 40 cm
G9 18 x MAX 25W
30 KG



AK SS7651-AK
W 170 cm - H 60 cm - D 40 cm
G9 18 x MAX 25W
30 KG



DK AP7651-DK
W 35 cm - H 90 cm - D 18 cm
G9 5 x MAX 25W
12 KG

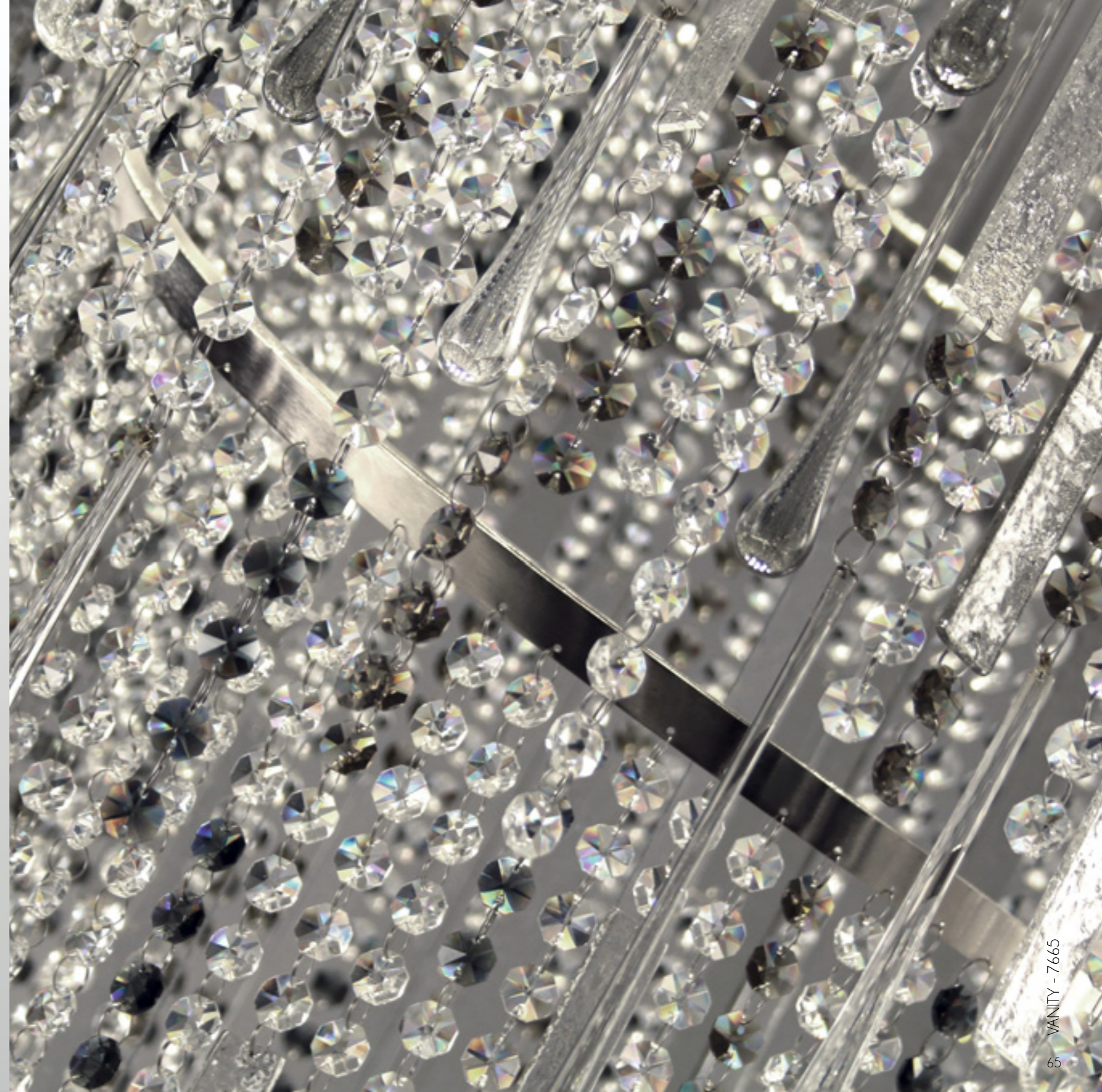


Vanity

CD PL7660-65x85-CDN1
Ø 65 cm - H 85 cm
G9 7 x MAX 40W
■ 18 KG



CD PL7665-100x280-CDN1
Ø 100 cm - H 280 cm
GU10 13 x MAX 15W
80 KG



CN SS7660-120x130-CN
Ø 120 cm - H 130 cm
G9 16 x MAX 40W
38 KG



CN SS7660-90x110-CN
Ø 90 cm - H 110 cm
G9 12 x MAX 25W
29 KG

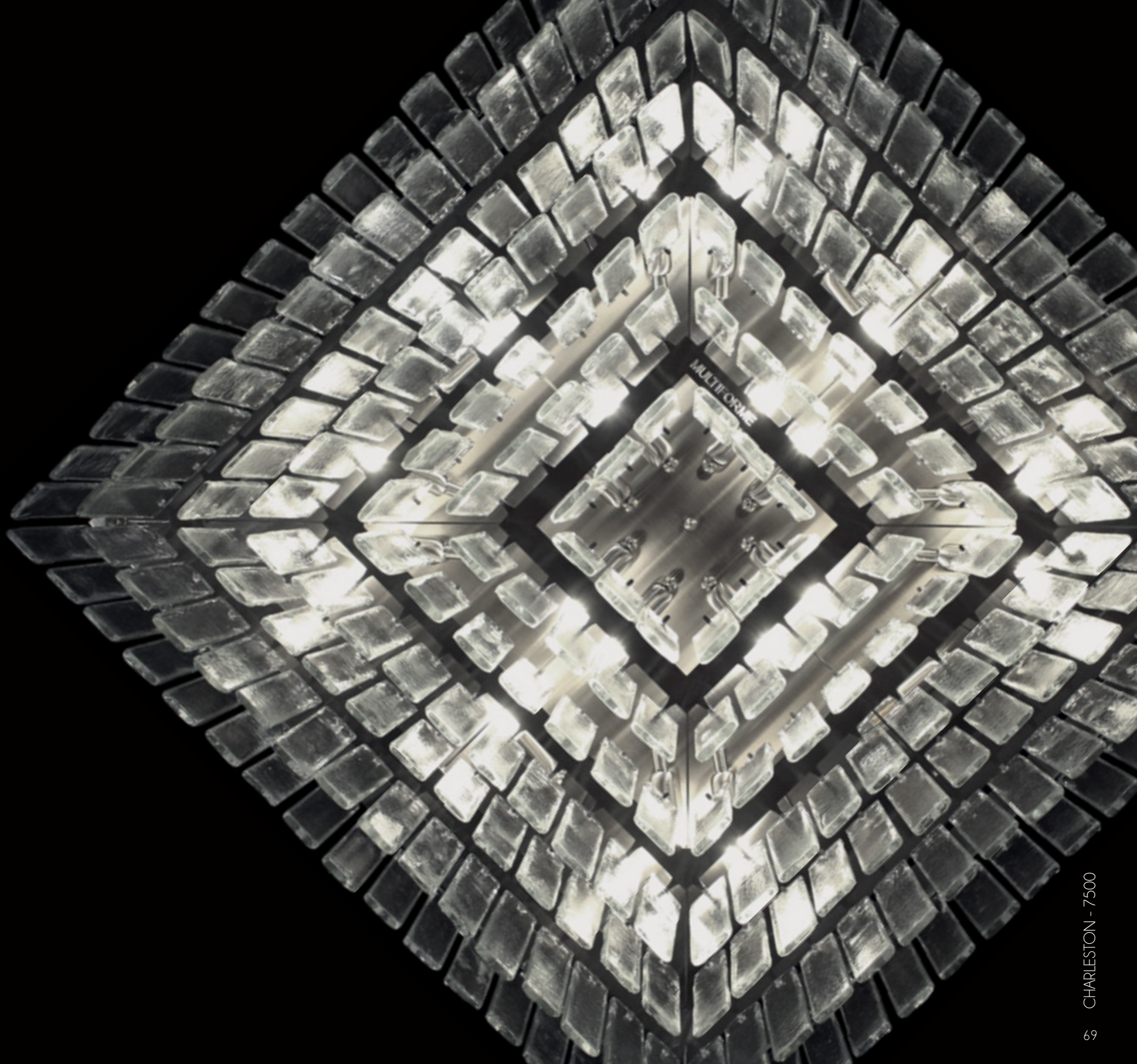
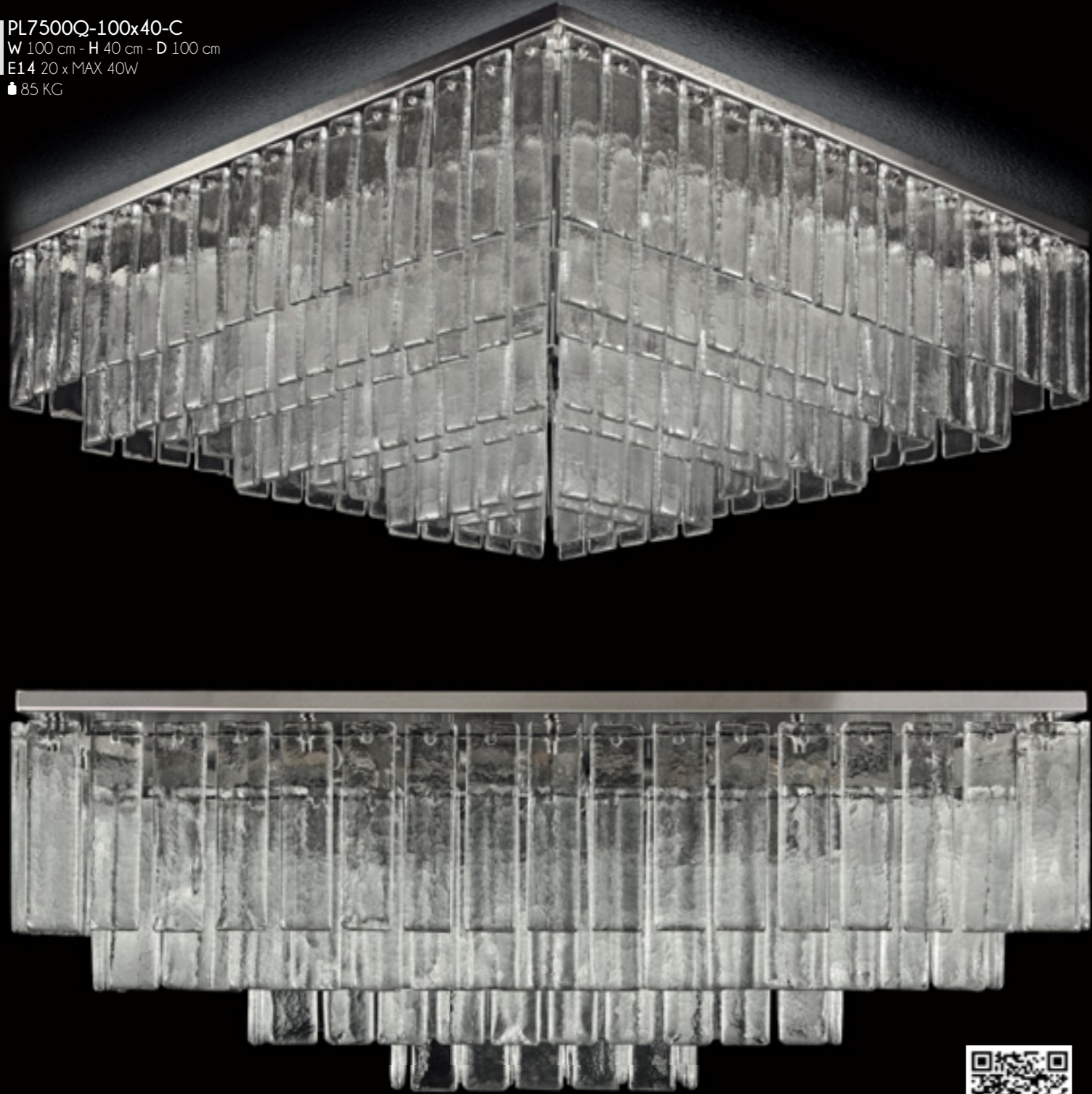


SS7660-60x70-CN CN
Ø 60 cm - H 70 cm
G9 9 x MAX 25W
25 KG



Charleston

C PL7500Q-100x40-C
W 100 cm - H 40 cm - D 100 cm
E14 20 x MAX 40W
85 KG



U1 PL7501-40x50-U1
Ø 40 cm - H 50 cm
E14 7 x MAX 40W
15 KG



PL7502-40x125-U1
Ø 40 cm - H 125 cm
E14 11 x MAX 40W
30 KG



A photograph featuring a dark silhouette of a tree branch with small leaves, set against a background of numerous warm, glowing bokeh lights. The lights are out of focus, creating a soft, ethereal atmosphere. The overall color palette is dominated by dark tones and warm, golden-yellow light.

TIMELESS

Serenade

F4V LP0370-8-F4V
Ø 100 cm - H 70 cm
E14 8 x MAX 40W
■ 7 KG



Melisanda

R SE0525-5+5-R
Ø 85 cm - H 80 cm
E14 10 x MAX 40W
■ 10 KG



Tourbillon

A2W

LP0505-6-A2W
Ø 100 cm - H 60 cm
E14 6 x MAX 40W
■ 9 KG



Metropole

D2 LE0380-15+10+5-D2
Ø 150 cm - H 160 cm
E14 30 x MAX 40W
■ 40 KG



K LE0380-16+8+4-K
Ø 150 cm - H 160 cm
E14 28 x MAX 40W
■ 40 KC



Montecristo

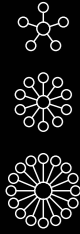


SRP0545-8-CW
Ø 100 cm - H 110 cm
E14 8 x MAX 60W
15 KG



Dandy

VAV DP0354-20+10+5-VAV
Ø 160 cm - H 175 cm
E14 35 x MAX 40W
40 KG



Velvet

A

LE0359-5+5-A
Ø 110 cm - H 85 cm
E14 10 x MAX 60W
■ 9 KG



Portofino

F2

L0356-6-F2
Ø 90 cm - H 80 cm
E14 6 x MAX 40W
■ 7 KG



Tobia

VD2 L0347-6-VD2-MG
Ø 70 cm - H 65 cm
E14 6 x MAX 60W
■ 6 KG



Pasternak

F2

LK1035-6-F2
Ø 70 cm - H 85 cm
E14 6 x MAX 60W
■ 10 KG



AC

SK1036-48-AC
CUSTOM WORK
Ø 140 cm - H 190 cm
E14 48 x MAX 40W
80 KG



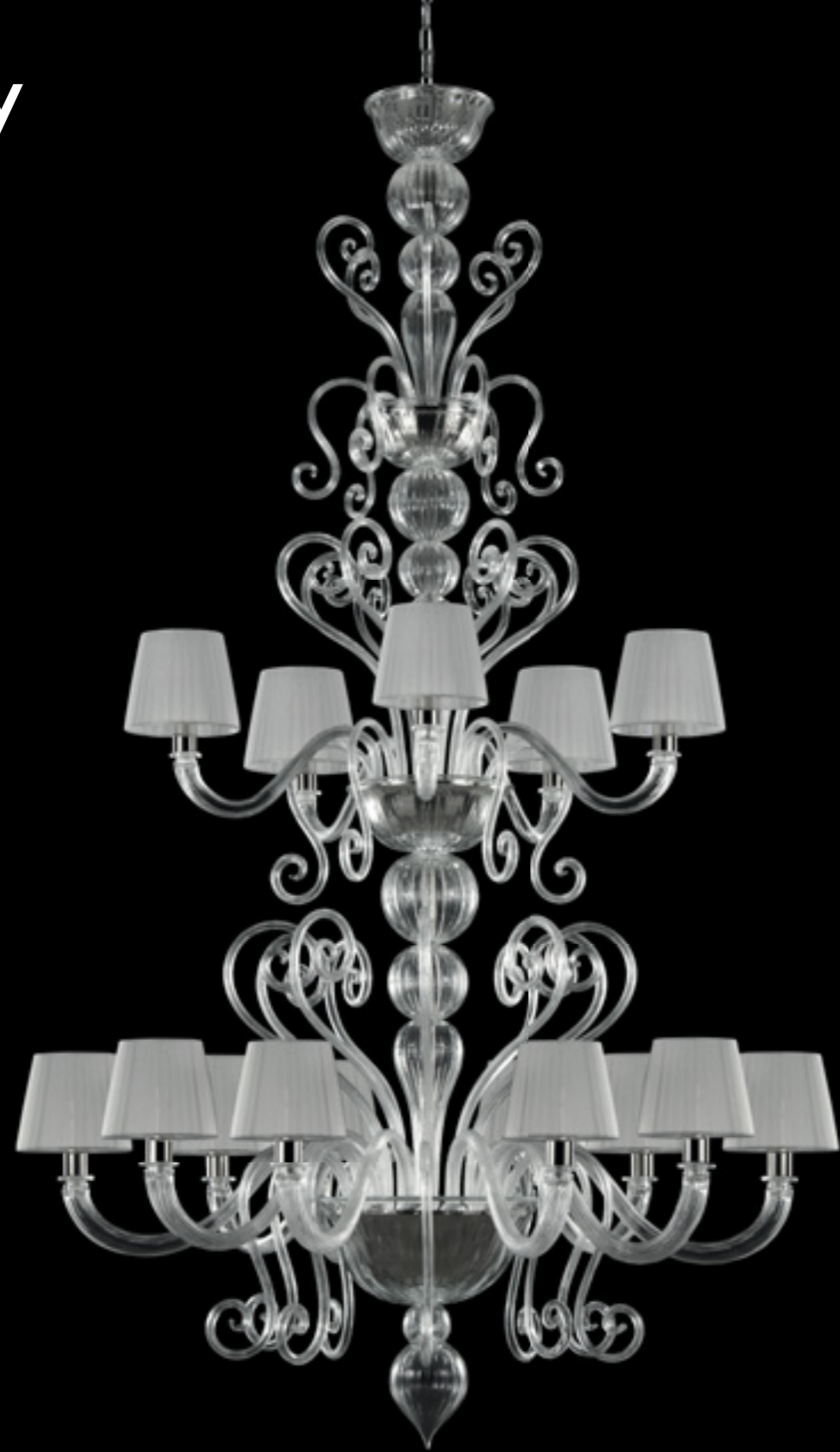
Americano

M2V LT0515-6-M2V
Ø 85 cm - H 90 cm
E14 6 x MAX 40W
■ 10 KG



Gatsby

CD1 SP0484-10+5+CD1
Ø 100 cm - H 170 cm
E14 15 x MAX 40W
■ 25 KG



Gatsby Naked



S0484-12+6-C
Ø 130 cm - H 190 cm
E14 18 x MAX 40W
30 KG



Diamante



L0355-6-AC
Ø 75 cm - H 75 cm
E14 6 x MAX 60W
■ 7 KG



BC LE0355-6+3-BC
Ø 80 cm - H 90 cm
E14 9 x MAX 40W
10 KG



Fluage

F2 L0278-6-F2
Ø 75 cm - H 80 cm
E14 6 x MAX 60W
■ 9 KG



Bovary

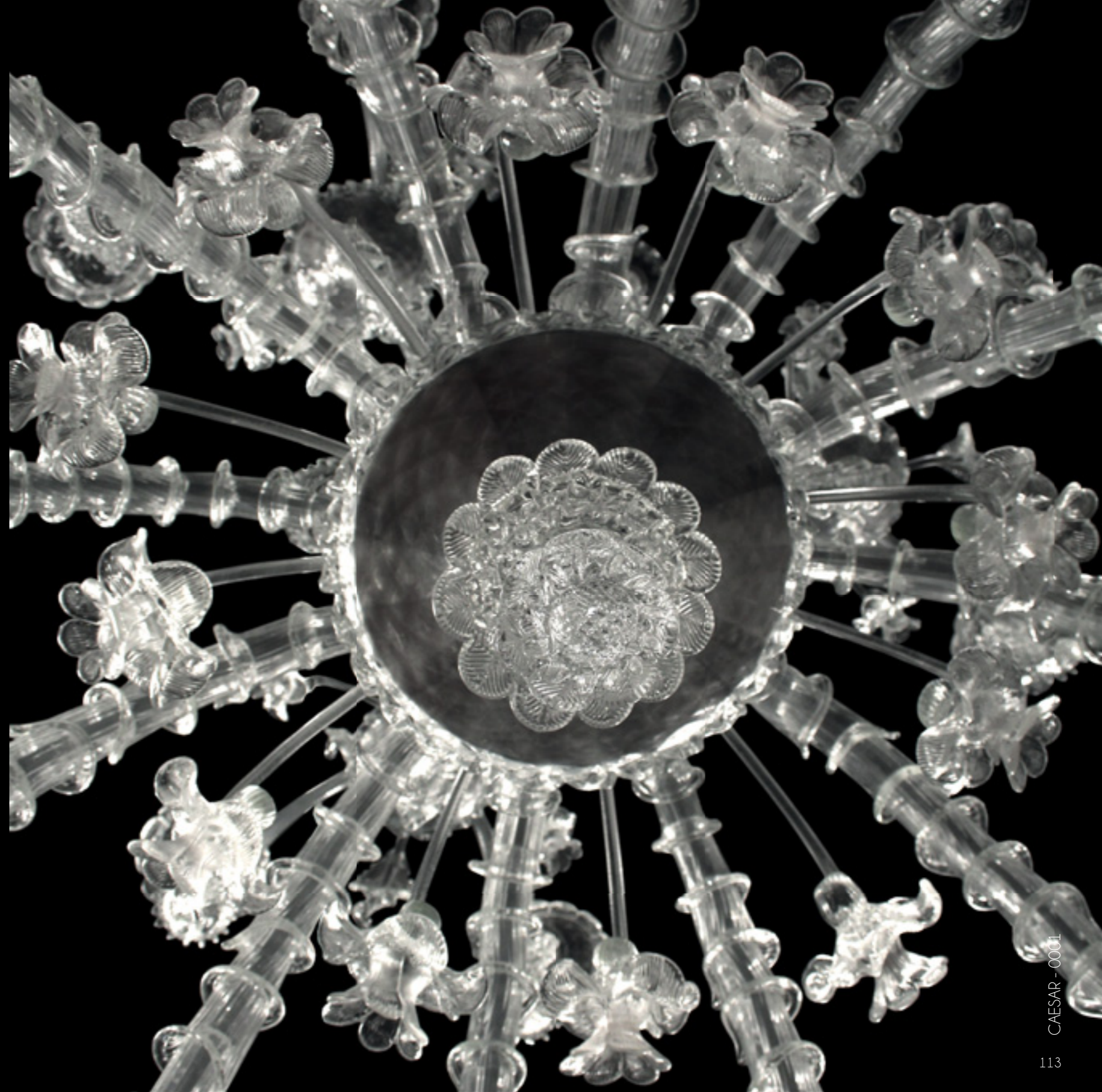
A2

S0811-42-A2
Ø 200 cm - H 300 cm
E14 42 x MAX 40W
■ 250 KG

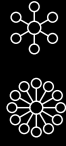


Caesar

C R0001-12+6+3-C-ML
Ø 200 cm - H 200 cm
E14 21 x MAX 60W
80 KG



C S0001-12+6-C
Ø 125 cm - H 180 cm
E14 18 x MAX 40W
8 30 KG



C AP0001-4+3-C
W 70 cm - H 100 cm - D 40 cm
E14 7 x MAX 40W
8 8 KG



C AP0001-4-C
W 70 cm - H 85 cm - D 40 cm
E14 4 x MAX 40W
5 5 KG



CPZK R0001-9-CPZK
Ø 100 cm - H 100 cm
E14 21 x MAX 60W
22 KG



CAESAR - 0001

CPZK APRO001-3-CPZK
W 50 cm - H 50 cm - D 40cm
E14 3 x MAX 40W
4 KG



CAESAR - 0001

Villa Borghese

CPZ R0746-9-CPZ
Ø 120 cm - H 120 cm
E14 9 x MAX 60W
■ 30 KG




Rosae Rosarum


M2 SE0251-6-M2GRZ
Ø 90 cm - H 95 cm
E14 6 x MAX 60W
■ 17 KG



CE The "CE" mark required by the European Community with the 93/98/CEE directive states that the luminaire complies with the European technical requirements.
La marcatura "CE" voluta dalla Comunità Europea con direttiva 93/98/CEE attesta la conformità dell'apparecchio ai requisiti richiesti delle norme tecniche.

IP Degree of protection provided against intrusion (body parts such as hands and fingers), dust, accidental contact, and water by mechanical casings and electrical enclosures.
The enclosure of this luminaire IP20 is protected against solid objects up to than 12 mm, no special protection provided against penetration of water.
Livello di protezione dal contatto con il corpo umano o con oggetti (prima cifra del codice), e la protezione dal contatto con l'acqua.
Apparecchi IP20 sono dotati di involucro protetto dalla penetrazione di corpi solidi superiori a 12 mm e non protetto dalla penetrazione di liquidi.

 Luminaire in which protection against electric shock does not rely on basic insulation only, but which are provided for the connection of accessible conductive parts to protective conductor in the fixed wiring of the installation.
Apparecchio nel quale la protezione contro la scossa elettrica si basa oltre che dall'isolamento principale anche dalla connessione delle parti conduttrici accessibili ad un conduttore di protezione dell'impianto elettrico fisso.

 The protection against electrical shocks of this luminaire is achieved by simple insulation and some other devices such as double insulation or reinforced insulation. There is no earth cable provided.
Apparecchio dotato di protezione contro la scossa elettrica basata sull'isolamento fondamentale e su misure supplementari quali il doppio isolamento rinforzato.



R	Ceiling cup / Rosone
C	Chain / Catena
H	Height / Altezza
∅	Diameter / Diametro
D	Depth / Profondità
W	Width / Larghezza
	Bulb / Lampadina
	Weight / Peso
	Insulation class / Classe isolamento
	Frame Finishes / Finitura metallica
	Glass color / Colore vetro
	Shade color / Colore paralume
MB	BABY extra extra small
MC	MICRO extra small
MG	MIGNON small
ML	LARGE large
MN	MAGNUM extra large

While maintaining the basic characteristic of the product, MULTIFORME® reserves the right to make modification at any time with the sole aim of improvement.
Ferme restando le caratteristiche basilari del prodotto, MULTIFORME® si riserva di apportare modifiche in ogni momento al solo scopo migliorativo.

MULTIFORME® Sas di Zorzi Renata & C.

Via A.Vespucci, 16
35010 Trebaseleghe (PD)
VAT IT04349890287
Ph +39 049 9387669
Mob +39 333 7570441
Fax +39 041 3965706
sales@multiforme.eu
www.multiforme.eu

FORNACE

Via Chebba, 67/o
30030 Oriago di Mira (VE)

CATALOGUE by MULTIFORME® communication team

Industrial and Intellectual Property rights

All the designs, brands, trademarks, domain names, the pictures and contents of this catalogue are exclusively owned by MULTIFORME® and are protected by the relevant provisions of Industrial and Intellectual Property Law. Their unauthorized reproduction even partial, modification, publication and any other use are strictly prohibited.

Diritti di proprietà industriale e intellettuale

I modelli, i nomi commerciali, i marchi, nomi a dominio, le fotografie ed i testi presenti in questo catalogo sono di esclusiva proprietà di MULTIFORME® e protetti secondo le norme a tutela dei diritti di Proprietà Industriale ed intellettuale. Qualsiasi loro riproduzione anche parziale, modifica, pubblicazione o altra forma di utilizzo, se non espressamente autorizzata da MULTIFORME® è vietata.



